

SAYA DE MALHA DAILY

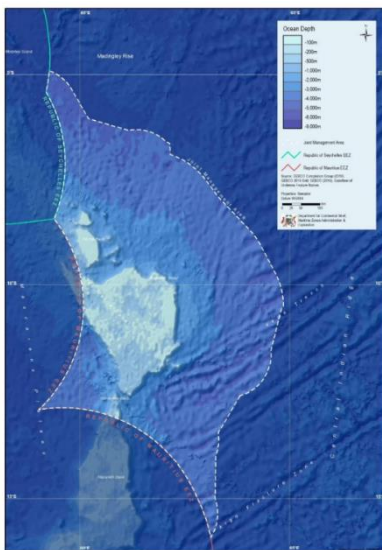
A Newsletter by Dominique and François



N°15, 16th November 2022

Where are we ?

South-West of Saya de Malha, Box 5
11.48° South 60.56° East
Sunny, Light Seas, Wind 17.3 Knots
Air Temperature 26°0
Water Temperature 27°2



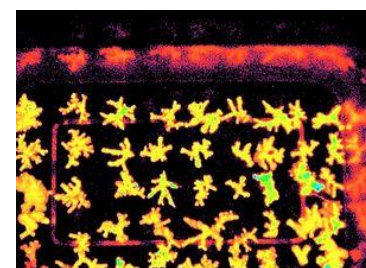
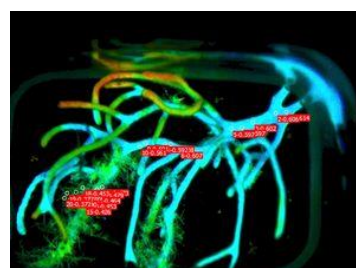
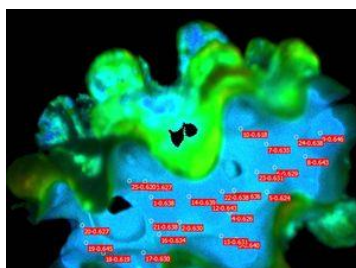
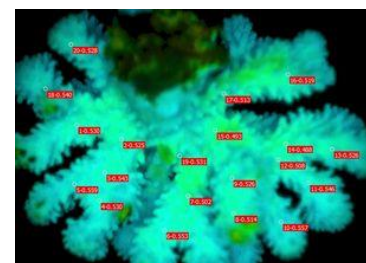
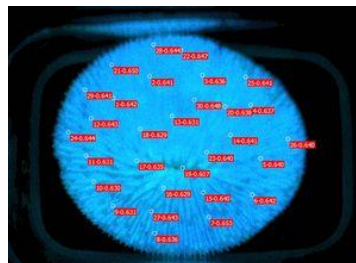
The JMA

Saya de Malha is outside of the exclusive economic zones of the nearest countries, Seychelles to the Northwest and Mauritius to the South, and is part of the high seas. Mauritius and Seychelles applied for an extension of their continental shelf under the Law of the Sea, which includes the Saya de Malha Bank. Unlike other countries which share an extended continental shelf, they have declared a joint extended continental shelf. They established a Joint Management Area (JMA) and a Commission responsible for its management. The water column, not included in the concept of extended continental shelf remains high seas. As a result, the Saya de Malha bank has two governance regimes, its seabed and resources are under the joint jurisdiction of Mauritius and Seychelles, and for the water column and its resources remains under the high seas regime.

What's on ?

Photosynthesis in colours

The University of Mauritius and the Ministry of Blue Economy, Marine Resources, Fisheries & Shipping are investigating the photosynthetic activities of phytoplankton and seaweeds and symbiotic invertebrates such as corals and giant clams. Specimens are scanned and the intensity of photosynthesis measured.



SAYA DE MALHA DAILY

A Newsletter by Dominique and François



N°15, 16th November 2022

The Portrait



Line Le Gall, Professor, MNHN

Line was born in 1976 in Normandy. She specializes. Her love of botany and the sea brought her naturally to her specialization in the taxonomy and evolutionary dynamics of algae. She is the director of the delegation to scientific explorations of the National Museum of Natural History and coordinates the Museum expeditions. On board, she oversees diving operations. She is an experienced diver and can dive to depth of 100m. "Diving requires trust and leadership". It also about common sense, which at time requires adjusting protocols developed for professional diving to scientific exploratory diving and good relationships with the crew. This expedition is multidisciplinary and not always easy to coordinate, but it is rich in experiences and encounters.

Catch of the Day

After each trawl, fish mouths straight from Hieronymus Bosch paintings!



Life on Board

The crew ready to work with researchers

